

# User's Manual

Carefully read all the recommendations

Ask all your questions

Our Support service works 16 hours/7 days



# PRO VSA EA 5+

 The most promising EA 2017-2018

 Created by a team of professionals

 [support@proforexea.com](mailto:support@proforexea.com)

**PRO FOREXEA.COM**

# **Increase the efficiency of trading by 256% today!**

The market is full of offers about trading robots. In 90% of cases nothing new is not created, but only old algorithms are changed. Our trading robot PRO VSA EA is created from the ground up and is the most technologically advanced trading robot, which is now freely available.

11 years of trading experience in the forex market, allowed to create a truly perfect algorithm, based on the principles of trade used by bank traders.

You have a unique opportunity to start trading at the level with professional traders.

95% of traders regularly lose money and can not reach a stable profit and for this there are several reasons:

- Lack of information
- Negative mathematical expectation of the strategy
- Obsolete public methods of trade
- Interference from broker and etc..

To make a full-scale volume analysis of the market is beyond the strength of an ordinary trader without specialized software. The main secret of the success PRO VSA EA - every second tracking the actions of market makers. We do not follow the lagging indicators, but we open the deal at the moment of the beginning impulsive movement created by the big traders. Due to the high accuracy of the signals and the ideal development of the mathematical side of the strategy, over 80% of the transactions are closed by the advisor with a profit.

The number of copies sold is limited to 399 copies. This ensures that the strategy will remain available, only a limited number of traders. You have a chance to become the owner of a unique strategy that has proven its profitability on a variety of accounts.

**"Miserliness  
is a constant  
poverty in  
fear of  
poverty."**

**User's Manual  
PRO VSA  
EA**

# Basic Principles of Profitable Trading

1. For profitable work of the Expert Advisor, you must use the VPS server.  
Without using VPS, the probability of successful trading is less than 10%.

Carefully read the requirements for the VPS server.

- Version Windows: Windows server 2008/2012
- Location: London
- Company: Chocoping
- RAM: Not less than 2 GB

Optimal for the ratio of price / quality is the company – Chocoping.

2. Before using the EA on a real account, you need to understand his work on the demo account and ask all incomprehensible/interesting questions.
3. A key role in the profitability of our advisor is played speed with which orders are executed. Then higher execution speed of your broker, then more chances to make a profit.
4. The speed of execution of transactions should not exceed 1000 ms, with a minimum number of requotes and minimal slippage. Trade with brokers with FCA regulation. Also use brokers from the list of recommended brokers.
5. It is most preferable to use accounts with **Instant execution**. It is also possible to use accounts with the **Market execution**, but this type of accounts increases the risks due to possible slippage.
6. Through the task manager, while working on a new server, you need to monitor the server load. Start the task manager on the VPS server by pressing the keys Ctrl+Shift+Esc.
7. In case of an unsatisfactory result of the trade, report this to the support service. Most likely we know what the problem is and help you set everything up.

"How much do you know of millionaires who have become rich by investing in bank deposits?"

User's Manual  
PRO VSA  
EA

# History Changelog

**v1.17 (1 December 2015)** - calculation of the lot for risk, the maximum lot is limited by the amount of available funds, and the maximum allowed by the broker

**v1.18 (21 January 2016)** - UDP

**v2.26 (16 March 2016)** - this is the common version number for the entire set

- accurate timers
- FIXUDP
- +SymbolSuffix

**v3.27 (29 June 2016)** -- position locking

- auto-alignment spread
- dynamic TP

**v3.28 (2 July 2016)** -- bugfix

**v3.29 (1 September 2016)** -- max order life time

-- scheduler - the work of the bot on schedule at the end of the session again expects a minimum lifetime and closes a couple of orders

**v3.30 (24 December 2016)** -- fixed lotsize for counter signals

**v3.31 (29 January 2017)** -- fixed closing of the deal on take profit, with ordermaxlifetime

**v4.32 (18 April 2017)** -- VolumeOrderFlow calculation includes a broker commission

- display of commission in points
- log correction

-- maximum spread - the ban on opening new positions if the spread exceeds the maximum allowable value

**V4.33 (3 August 2017)** -- max allowed spread - If the spread exceeds the value of the signals to the input are ignored, the log displays a spread over

-- connection of the scheduler to the news schedule.

-- maxexecutiontime = 1000; // max execution time, ms. - when exceeding the opening of new positions is terminated

-- maxexecutionslip= 10.0; // max execution slippage, pp. - when exceeding the opening of new positions is terminated

**V4.34 (9 November 2017)**-- output slip on the infopanel, the last and average values.

"You want  
to have a  
good  
income?  
Then act!"

User's Manual  
PRO VSA  
EA

**V4.35 (21 December 2017)**-- completion of the news planner,

**// start hour:minute:second - start of trading**

**// stop trade hour:minute:second - ban on the opening of new positions**

**// close positions hour:minute:second - closing all positions, including the lock**

**//--== news sheduler section ==--**

**// disable trade before news, minutes - ban on the opening of new positions**

**// close existing positions before news, minutes - closing all positions, including the lock**

**// indent after news, minutes - resumption of trading**

**V4.36 (11 January 2018) – Built-in UDP. Optimization of work, increase the speed of the algorithm.**

**V4.9 (01 March 2018) – Optimization of code, elimination of version errors. Finish version before global strategy update.**

**V5.0 (21 June 2018) – Global update. Focus on ECN brokers.**

**// Adaptation of the code for MT4 Build 1090+**

**// Updated list of brokers**

**//Commission \$\$ for 1 mil.dollars**

**//Virtual Take If Rollback more than**

**//TrailingStop – normal trailing works in conjunction with BreakEven**

**//BreakEven – will increase the mathematical expectation of the strategy. In manual mode, adapts to the quality of the broker's execution.**

**//AutoSlippage – Reducing the number of requotes on Instant accounts. Neural algorithm for determining the maximum allowable deviation.**

**//MarketOrder – the issuance of S/L and T/P after the opening of the transaction.**

**V5.1 (5 July 2018) – Strict character control. Rejection of the function symbolsuffix. Added VolumeSymbol function. For each symbol, an individual formula is used to measure the degree of influence of VolumeOrderFlow at the moment the price moves.**

**"My main advice - do not lose money because of ignorance, but use the tools that are now working."**

**User's Manual  
PRO VSA  
EA**

# Installing the Expert Advisor in Metatrader



After downloading, you received the archive Pro\_VSA\_EA\_Demo\_5.1.zip. Unzip this archive. The archive structure is as follows:

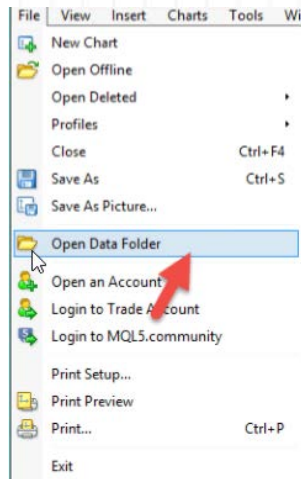
1. **!!Important - Brokers for Trade!!** – A folder containing trading terminals of recommended brokers.
2. **Manual ENG RUS** – folder containing instructions
3. **PRO VSA EA** – A folder containing the advisor file and a template for Metatrader 4.

In the folder Pro\_VSA\_EA, contains two folders, MQL4 and Templates, you need to copy the folder data to the trading terminal by performing the following actions:

1. MT4 -> File -> Open Data Folder.

"If you are happy, sitting in one place and not taking risks, you will remain seated in the same place for the next 20 years."

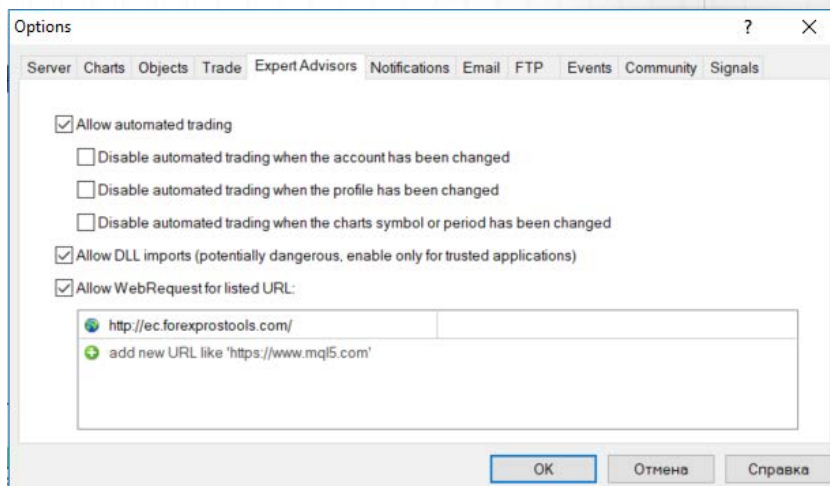
User's Manual  
PRO VSA  
EA



2. In the open folder, press - "Paste", agrees to replace and merge folders

3. Go to the trading terminal -> Tools -> Options -> Expert Advisors. Check to be check mark as scrin. It is important that DLL imports have been allowed.

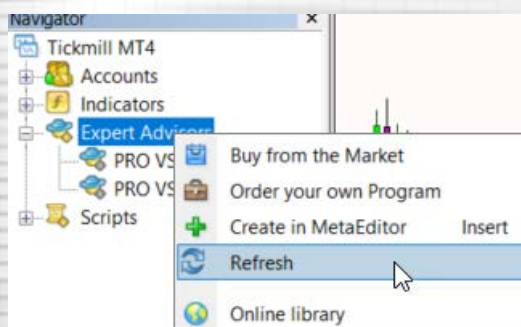
**Without this checkmark EA will not work!**



4. Allow WebRequest for listed URL and enter this link, in case you want to use a news filter:

<http://ec.forexprostools.com/>

5. Go to the Navigator window -> Expert Advisors -> Right click -> Refresh..

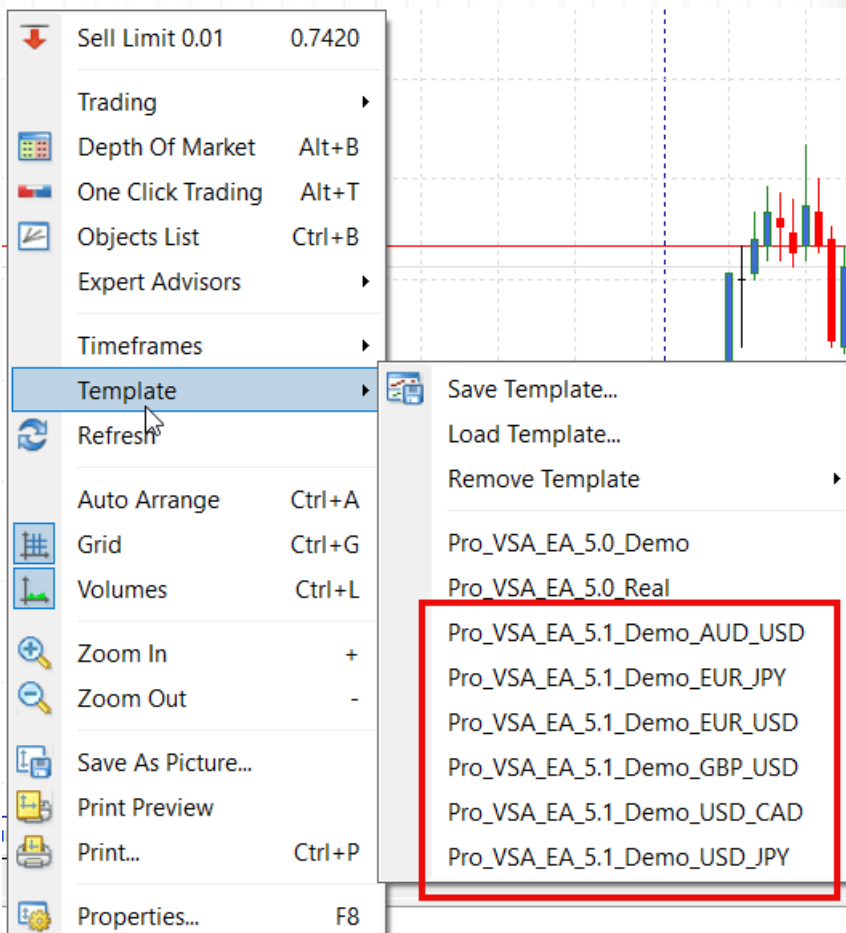


6. After the Refresh, in the "Expert Advisors" should appear Pro VSA EA.

"Who does not leave anything to chance, almost everything does the right thing - only he can do little."

User's Manual  
PRO VSA  
EA

- This version of the advisor is created for trading on the main currency pairs. **EUR/USD, GBP/USD, USD/JPY, EUR/JPY, USD/CAD, AUD/USD.**
- Start the advisor, or in one of the charts of currency pairs (see para. 7), or on all currency pairs. For the open chart, **right click -> Template -> Choose a template in accordance with the currency pair.** If you want to run at the same time adviser on several currency pairs, this operation must be repeated on each chart.



- For the EA to start trading, it is necessary that a successful license check is completed. All information about the errors and statuses of the process is displayed in the Experts tab of the trading terminal.

"At the root of every successful company stands once taken a bold decision."

User's Manual  
PRO VSA  
EA



Ready, Volume spread analysis start...

Symbol: AUDUSD  
Spread: 0.3  
Lot: 22.04  
Leverage: 100  
VolumeOrderFlow: 2.50  
Slippage avg: 0.0, last: 0.0  
Work Demo Version  
PRO VSA EA  
Support: info@proforex.com  
To make a profit, use VPS server  
EA open 1-5 deals in 24 hours

EA will  
trade

License Ok, No Trade, Restart EA

Symbol: EURGBP  
Spread: 0.3  
Lot: 16.64  
Leverage: 100  
VolumeOrderFlow: 2.50  
Slippage avg: 0.0, last: 0.0  
Work Demo Version  
PRO VSA EA  
Support: info@proforex.com  
To make a profit, use VPS server  
EA open 1-5 deals in 24 hours

EA will  
not  
trade

## Settings and Features PRO VSA EA

A lot of settings at first glance may seem too complicated, but it's not. By default, the Expert Advisor comes with the recommended settings for all brokers from the list Important - Brokers for Trade. **In case you want to work with another broker, it is possible that to achieve profit necessary to select the settings for this broker type of account.**

== Main Section ==

- **Login** - Only in real version. indicate login and password received in the letter after purchase.
- **Password** - Only in real version. indicate login and password received in the letter after purchase.
- **VolumeSymbol** - Select the symbol from the list in accordance with the current Chart of the currency pair.
- **SymbolsSuffix** - ~~Some brokers, currency pairs have a suffix. For example, EURUSDpro, in this case would be a pro suffix that should be entered in this field. If it were indicated EURUSD.pro, then it is necessary indicate -.pro.~~ Removed from version 5.1
- **VolumeOrderFlow** - The optimum value ranges from 2 to 5. This parameter is the key value that defines the conditions of the order opening. The larger this value, the fewer orders are opened and the more likely the order will close with a profit. The smaller this value, the more often the EA opens deals, but the probability of profitability of such transactions becomes smaller.
- **SpreadCoef** - Can be any number from 0 to 1. This parameter is introduced in order to correct the value of the spread, and use in the algorithms in the advisor. We recommend to vary this ratio from 0.3 to 0.6.
- **Commission \$\$ for 1.000 000 dollars. one side** - commission broker for opening transaction in one side. If there is no commission, then enter 0.

== Protection Section ==

- **Impulse** - The difference in two successive ticks. Indicated in pips. Разница в двух следующих друг за другом тиков. Указывается в пунктах. If the condition for opening the VolumeOrderFlow is satisfied, but the amount of

"Only those who are ready to take risks swim away. Safe boats do not go far from shore."

User's Manual  
PRO VSA  
EA

the impulse will be insufficient, the Expert Advisor will not open the transactions. This parameter is a filter for false signals.

- **StopLossTrade** – the number of consecutive, unprofitable transactions, after which the advisor will stop the trade. Trade will be stopped before the intervention of the trader.
- **Max Allowed spread** – The maximum value of the spread at which the adviser can trade.
- **Max Execution Time** – If the execution time of the last transaction is higher than the set value, then the trade will be stopped.
- **Max Execution Slippage** – If the slip in the last trade is higher than the set value, then the trade will be stopped.
- **Min Order Life Time in seconds** – Minimum order lifetime.
- **Max Order Life Time in seconds** – The maximum lifetime of the order.

#### == Trade Order Section ==

- **VirtualTake\_Profit** – Virtual take profit. It is recommended to use a value from 1 to 3. If 0, it is turned off.
- **VirtualStop\_Loss** – virtual stop loss, invisible to the broker. It is recommended to change this value from 5 to 10.
- **VirtualTake if Rollback more then** – Calculate the rollback of the maximum value of the current candle. Use a value of 0.1 - 0.5 to trade in a volatile market, and use the value of 0.5-1 to trade during news releases.
- **Take\_Profit** – Visible Take that is sent in order for opening an order.
- **Stop\_Loss** - Visible Stop that is sent in order for.

#### == OrderManagement Section==

- **EnableTrailingStop** – True/False. Enable/Disable the trailing stop.
- **TrailingStart** – number of pips, through activated TrailingStop
- **TrailingStop** – trailing stop level.
- **TrailingStep** – trailing stop step.
- **EnableBreakeven** – True/False. Virtual Lossless Level.
- **BreakevenTrigger** – The number of profit pips, for triggering a breakeven.
- **BreakevenLevel** – The level of the breakeven from the opening price.
- **OrderOpenSlippage** – slip on the opening order.
- **OrderCloseSlippage** – slip on order closing.
- **AutoSlippage** – True/False Advisor automatically calculates the possible slippage, based on the market data.
- **Use Locks** – True/False. Lock position instead of take.
- **AlwaysInMarket** – True/False. When you turn on, the lock will not close. When signals arrive, one of the transactions in the lock will be closed and a new one will open.
- **MarketOrder** – True/False, in the case of True, the advisor sets the S/L and T/P after opening the order. This function is needed for accounts with Market execution.

"Always  
determine  
your risks  
so you do  
not have to  
worry  
about  
them."

User's Manual  
PRO VSA  
EA

- **Magic** – The unique number used to identify the orders of the adviser

== Money Management section ==

- **AutoRisk - % of balance** – risk per trade is determined in % of available funds. On accounts where the leverage is too small, it is recommended to use this option by 1-5%. On accounts where the leverage is greater than 1:500, you can use the risk to 10%.
- **Lot** – fixed lot for trade.
- **MaxLot** – The highest possible lot, when ea use with parameter AutoRisk.

== Sheduler section==

- **UseSheduler** – True/False. Use or not the scheduler. The scheduler is applicable if you enable the AlwaysInMarket parameter to avoid swaps.
- **StartTime** – Time to start trading.
- **EndTradeTime** – The end time of the trade. After this time, new transactions are not opened.
- **CloseTradeTime** – Closing time for all trades.

== News Sheduler section ==

The filter is set to turn off trading during the news.

- **Disable Trade before News** – Stop the trade before the news.
- **Close Existing** – Close existing transactions before release.
- **Indent after News, minutes** – 0 disable news filter. Initialization after a specified number of minutes after the news.
- **Your Time Zone** – Specify the time of your broker's terminal by GMT(1,2,3 or -1,-2,-3).
- **Enable hard news** – Consider important news.
- **Enable medium news** – Consider news of medium importance.
- **Enable light news** – Consider news of low importance.
- **NewsSymb** – Symbols to take into account the news.

Other parameters respond to the graphical display of news and a set of tools that take news into account.

## Licensing

"Successful investments are comparable to convincing people of their rightness ... later."

User's Manual  
PRO VSA  
EA

On the pages of our site, you can review the terms of the [license agreement](#) using our product, you automatically agree to the terms of this agreement.

After buying an advisor, you are given a unique login and password, as well as an adviser with the ability to work on real trading accounts. The license is limited to the number of trading terminals for simultaneous work. There are no bindings to the account. You can turn off one trading terminal and start work on another one.

The **demo version** of the Expert Advisor on one computer can work on an unlimited number of terminals of different brokers and on several charts of currency pairs. The **real version**, depending on the chosen tariff plan.

## The result

Advisor Pro VSA EA, has some subtleties in installation and configuration, but these features of the installation are associated with its innovative trading strategy. **The development of the algorithm spent more than 3000 hours.** You are given the opportunity to feel like a professional trader.

Installing the Expert Advisor once, you will no longer have difficulties in its further configuration. We tried to simplify as much as possible its complex algorithms and create basic settings through three parameters VolumeOrderFlow, SpreadCoef, Impulse.

### Recommendations:

- Use the VPS server
- Install the Expert Advisor on all recommended currency pairs
- Work with several brokers
- In case of high delays in execution and slippage, change the account
- Make sure that the advisor is in the status - **Ready, Volume Spread analysis start**
- A detailed log of the advisor's actions is located in the Experts tab of the trading terminal

The number of copies sold is limited to 399 copies. On June 21, 2018, 304 copies were sold. This is due to the fact that we do not want our trading methods to gain wide popularity. In addition, when creating an advisor, we did not set the task of putting it up for sale and earning on the sales advisor. A limited number of sales advisor, will make our product even better and for a long time to make a profit.

"Not one person in the world knows how the markets will behave in the short term. But modern technologies allow us to predict short-term trends."

User's Manual  
PRO VSA  
EA